



Creating a Primary Stroke Center:
A Presentation to the Beacon Collaborative
October 27, 2009

Lindsey Shank RN MS CNS CCRN
Clinical Nurse Specialist/Stroke Care Coordinator
Kaiser Oakland/Richmond

Provided by Beacon Collaborative
www.beaconcollaborative.org

 KAISER PERMANENTE.

Creating A Primary Stroke Center

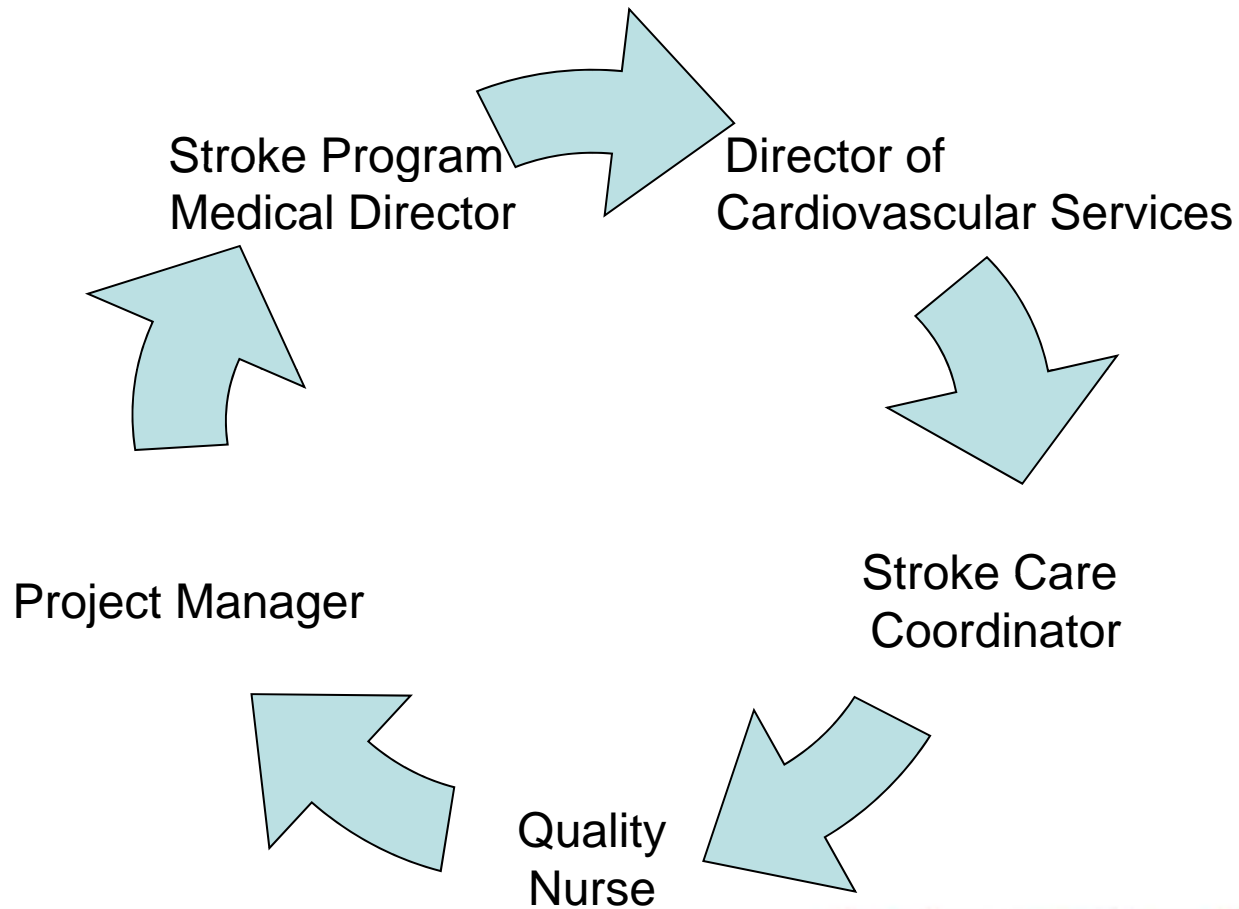
- Support
- Structure
- Development
- Implementation
- Performance Improvement




- Buy-in from Leadership
 - Hospital
 - Physician
- Physician Champions



Structure: Assembling the Right Team



- The 3 Ps:
 - Policies & Procedures: beg, borrow or steal
 - Preprinted Orders
 - Stroke/TIA Admission Orders
 - Stroke Post-thrombolytic Admission Orders
 - Stroke Thrombolytic Orders
 - People:
 - Workgroups  Oversight Committee

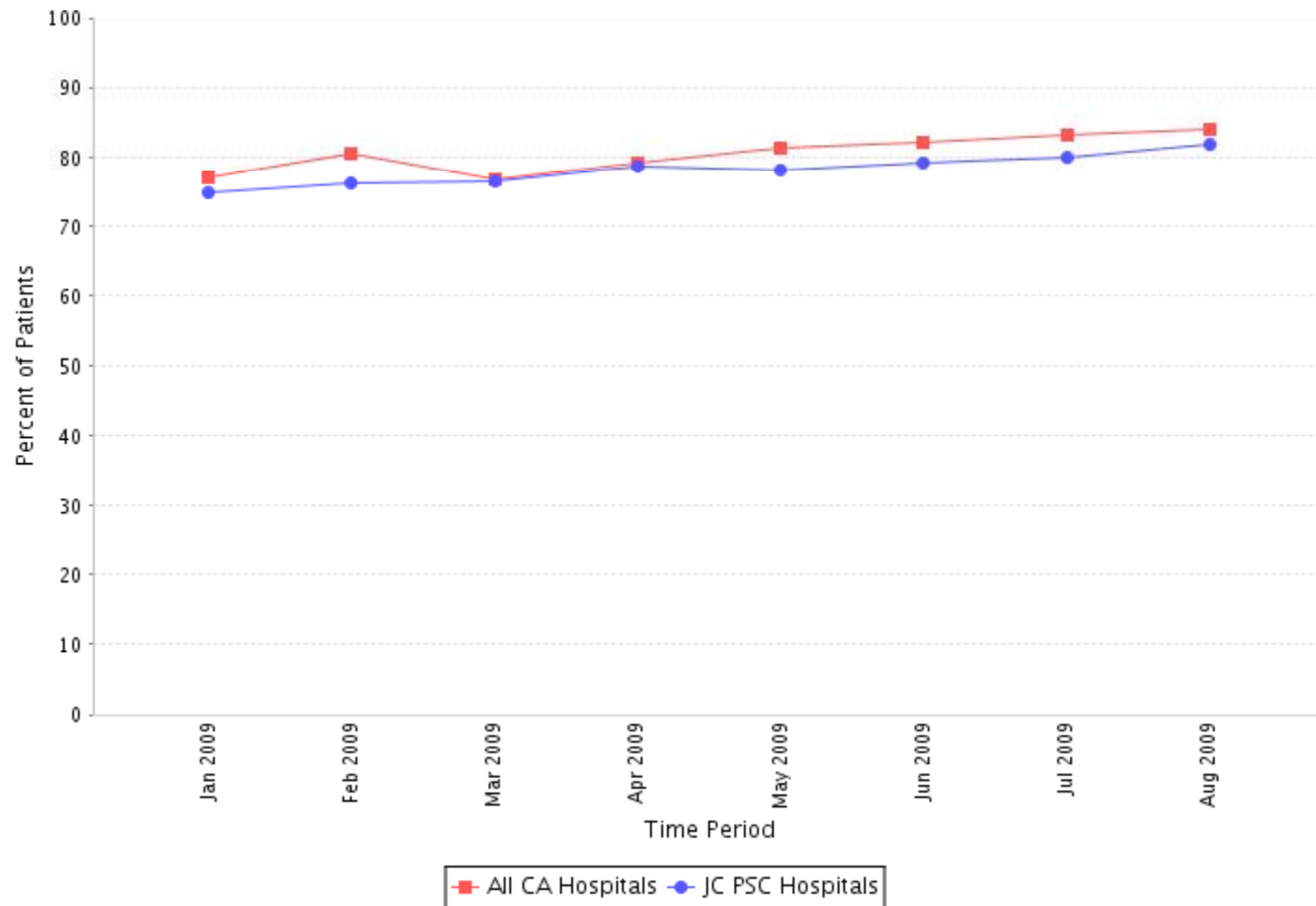


Implementation

- Research
- Concurrent Review
- Champions
- The Enforcer



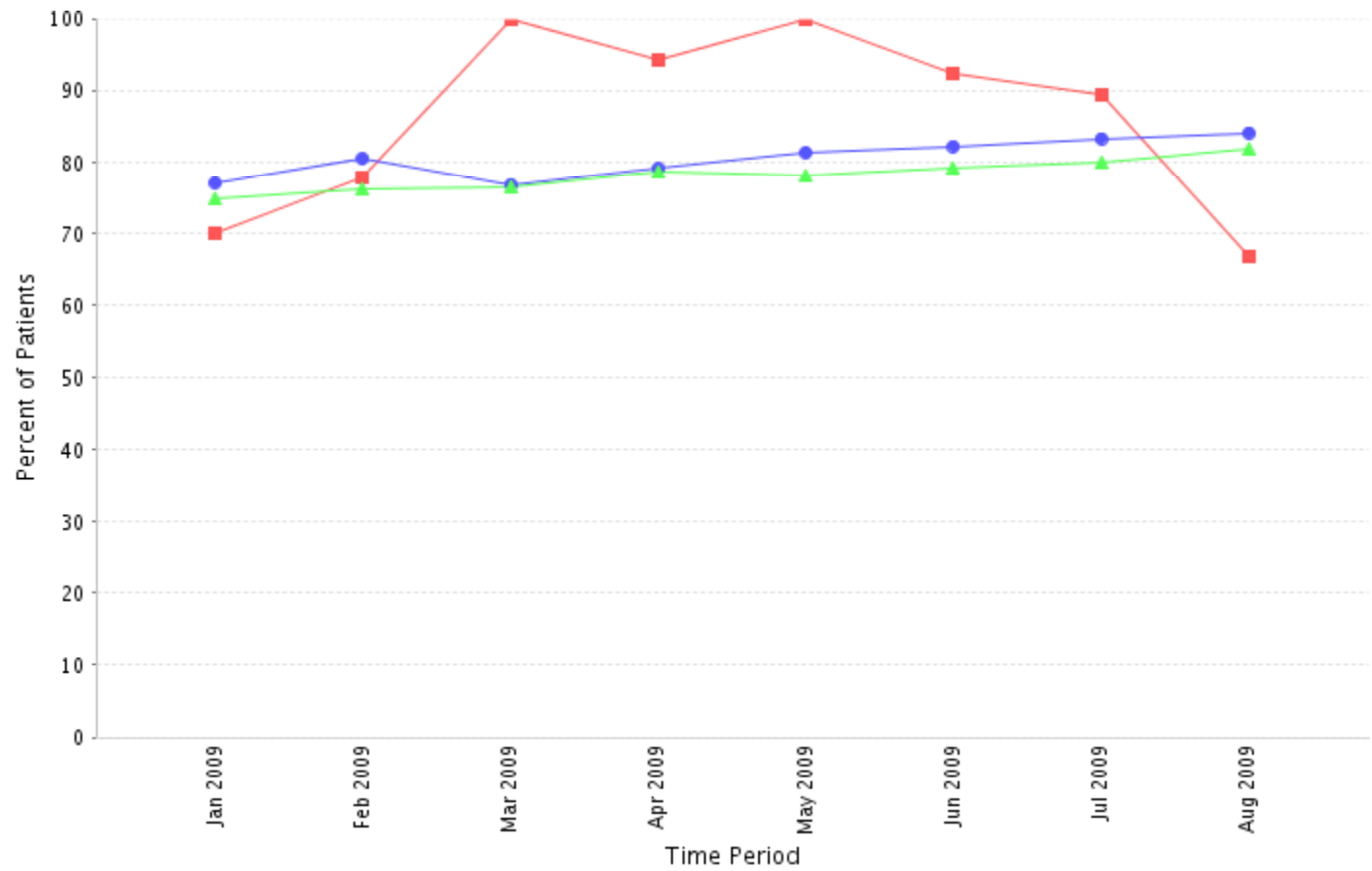
Performance Improvement: Tackling the tough stuff



Dysphagia Screening



Performance Improvement: Tackling the tough stuff



■ My Hospital ● All CA Hospitals ▲ JC PSC Hospitals

Dysphagia Screening



- Concurrent Review
- You're only as good as your unit-based partners
- Dr. Pearl's "17 times rule"
 - Huddles
 - Blogs
- It's all about.....
 - The Patient
 - The Data



???

- Questions?
- Thank you for the opportunity to present at your conference

